

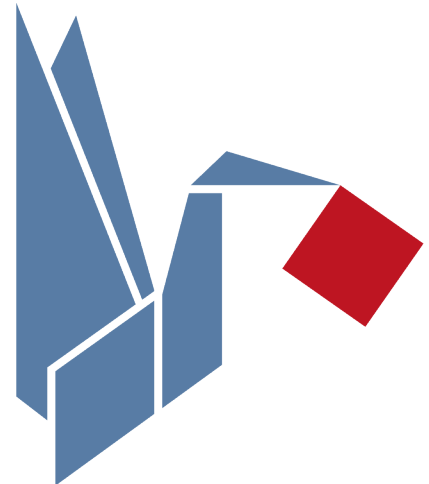
BLUETRAILS

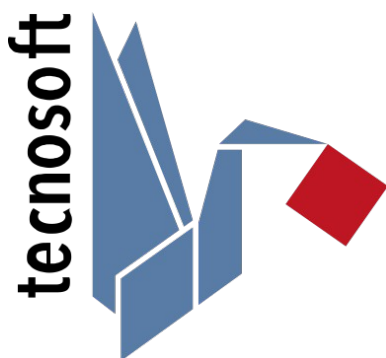
User's Manual

Version 2.0.4

Date 01/09/2022

tecnosoft
WE DELIVER DATA





Tecnosoft srl
Via Luigi Galvani, 4, 20068, Peschiera Borromeo (MI) –
ITALY
+39 0226922888 - tecnosoft@tecnosoft.eu -
tecnosoft.eu



INDICE

LICENSE AGREEMENT	4
INTRODUCTION	5
MINIMUM REQUIREMENTS	5
BLUELOG CUSTOMIZABLE	5
TECHNIQUE SPECIFICATIONS	5
MEMORY	5
APPLICATION	5
INSTALLATION	6
IOS: HOW TO ACTIVATE LOCATION SERVICES FOR INDIVIDUAL APPS	6
ANDROID: HOW TO ACTIVATE LOCATION SERVICES FOR SINGLE APPS	7
ASSOCIATION E SELECTION	8
5 WAYS TO ASSOCIATE BLUELOG WITH THE BLUETRAILS APP	8
SELECT/DESELECT THE BLUELOG	9
SETTING	10
START A MISSION	11
CUSTOMIZE A MISSION	11
START A MISSION IN "REAL-TIME"	13
START A MISSION IN "START ONLY"	13
STOP THE MISSION	14
STOP A MISSION IN "START ONLY"	14
STOP A MISSION IN "REAL-TIME"	14
MISSION ARCHIVE	14
WINDOWS OF DETAILS OF THE MISSIONS	15
FERMATE	15
MAP	15
INFO	16
PRINT OPTIONS	16
TABLE	18
GRAPH	18
REPORT	19
PDF	19
EXCEL	20
HTML	20
TXT	20
BUTTONS, BUZZER E LED	21
BUTTONS	21
BUZZER	21
LED	21
ACCESSORIES	22
SUPPORTO A MURO	22
BLUETOOTH THERMAL PRINTER	22
RESOLUTION OF PROBLEMS	23

License agreement

Read this license agreement thoroughly before using the Software. Using and copying this Software is subject to the acceptance of this agreement. If you choose to refuse the following conditions, please delete the downloaded software or return the support where this Software is saved to the provider.

This agreement involves Tecnosoft srl, Peschiera Borromeo, Milano, Italy (henceforth called Tecnosoft) and the User (be it a physical or juridical person) for the following software products (henceforth called Software): "TS Manager" and any software product accompanying it. Tecnosoft grants the user a revocable, non-exclusive, limited right to use a copy of the software on one or more computers provided that the user accepts the following conditions.

1. **User license.** The Software is property of Tecnosoft and cannot be copied nor sold without the prior written authorization of Tecnosoft. The Software is protected by Italian and European Laws and by International Treaties concerning intellectual properties and copyright.
2. **Exclusion of liabilities.** Except for what stated by applicable laws, in no case can Tecnosoft be considered liable for damages or losses, direct or indirect, including, but not limited to, loss or missing income, suspension of activities, loss of information or any other monetary or economical damage, deriving from proper or improper use of the Software even if Tecnosoft has been advised of the possibility of such damages. In any case, the responsibility of Tecnosoft for such damages will be limited to the price paid for the Software. This clause is applied even if the User does not accept the license agreement of the Software.
3. **Use of Software results.** It is User's responsibility to check that results given by the Software are correct and appropriate. In no case the Software should be used if such use can be threatening to the health or life of human beings. This clause is applied even if the User does not accept the license agreement of the Software.
4. **Updates.** If the Software is an update of a previous version, the license is transferred from the old version to the update. Only the update can be used.
5. **Separation of components.** The Software is licensed as a single product. Components cannot be separated.
6. **Limitations.** The User cannot convert, decode, decompile or disassemble the Software, except for what is explicitly requested by applicable laws.

Neither the whole nor any part of the information contained in this manual, nor the product described in it may be adapted or reproduced in any material or electronic form without the prior written consent of the copyright holder. This product and its documentation are supplied on an as-is basis and no warranty as to their suitability for any particular purpose is either made or implied. Tecnosoft s.r.l. will not accept any claim for damages howsoever arising as a result of use or failure of this product. Your statutory rights are not affected. This product or any variant of it is not intended for use in any medical appliance, device or system in which the failure of the product might reasonably be expected to result in personal injury. This document provides preliminary information that may be subjected to change without notice. No freedom to use patents or other intellectual property rights is implied by the publication of this document.

Introduction

Minimum requirements

Supported Android versions: 10 or higher
Supported IOS versions: 14 or higher
Supported Bluetooth versions: 4.0 or higher
NFC: to use NFC pairing

BlueLOG Customizable

All BlueLOG have these features:

- Tag Contactless (NFC) on the back
- Hard case with o-ring

Types of available sensors (only one of which can be positioned):

- Internal temperature sensor
- Rubber external temperature probe
- External temperature probe in Teflon
- Temperature and humidity sensor with filter

Opzioni disponibili:

- Buzzer for acoustic alarms
- Contactless tag (NFC) also on the front
- Accelerometer 16G
- Accelerometer 400G (16G Accelerometer also needed)
- Extended memory
- Anti-fraud system on positioning

There are two possible types of alternative power supplies:

- 2 X 1,5 V AAA Battery
- 1 X Battery 3,6 V -50°C

Accessori:

- Bluetooth Printer
- Wall mount

Technique specifications

Dimensions: 67 X 20 X 97 (mm)

Weight: 18 g

Temperatur range: -30 °C +60 °C

Acquisition step: From 1 minute up (in steps of 1 minute)

Battery type: 2 AA da 1,5 V batteries

Protection degree: IP67

Memory

The BlueLOG stores data on its internal memory, the capacity of which varies depending on the model. When the BlueLOG's memory is full, it will stop recording.

Models: RH – P – PUFF – GI – GRH – NRH – XRH – TRH have an acquisition limit of 8730.

Models: Basic – M – NM – NP – X – XP – TTR – ME – SE have an acquisition limit of 13100.

Application

BlueLOG has been designed to monitor temperature, tilt and shock conditions in transport, preventing deterioration of goods. It's possible to get instant feedback via App, via email in different formats or by printing out a receipt to leave to the recipient. For these reasons, BlueLOG is ideal for the food, pharmaceutical or medical industries.

Installation

Open your App Store:



In the search bar type “BlueTrails” and press enter.

Choose the blue logo and Install.



To use Bluetooth devices, you must activate Geolocation.

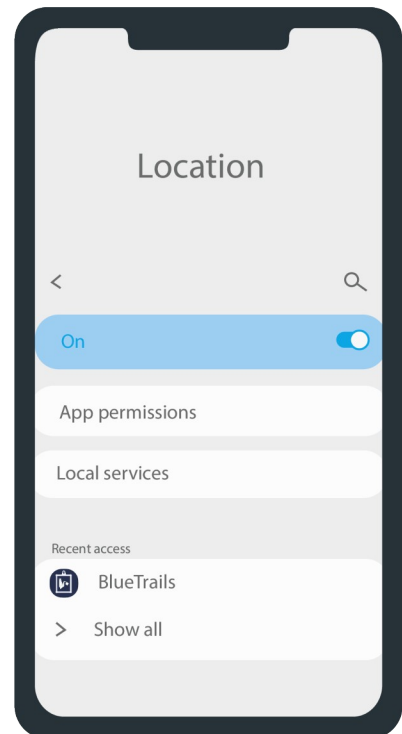
IOS: How to activate location services for individual Apps

1. Go to Settings > Privacy > Location
2. Ensure that Location Services are active.
3. Scroll down to find the app.
4. Tap the app and select one of these bold options:
 - **While using the app:** Allows access to location services only when the app or one of its features are visible on the screen.
 - **Always:** Allow access to your location even when the app is in the background.
 - **Never:** Prevents access to location information. (This option, if checked, does not allow the app to work properly)
 - **Ask next time:** Allow the app to use location but only until you close it. The next reopening will require access.



Android: How to activate location services for single Apps

1. Go to Settings > Location
 2. Make sure the button is active
 3. Tap on Application Permissions
 4. Scroll down and press on BlueTrails
 5. Tap the app and select the option in bold:
- **Only allow while the app is in use:** Allows access to location services only when the app or one of its features are visible on the screen.
 - **Do not allow:** Prevents access to location information (This option, if checked, does not allow the app to work properly)
 - **Ask each time:** Allows the app to use localization but only until you close it. The next time it reopens, you will be prompted for access.

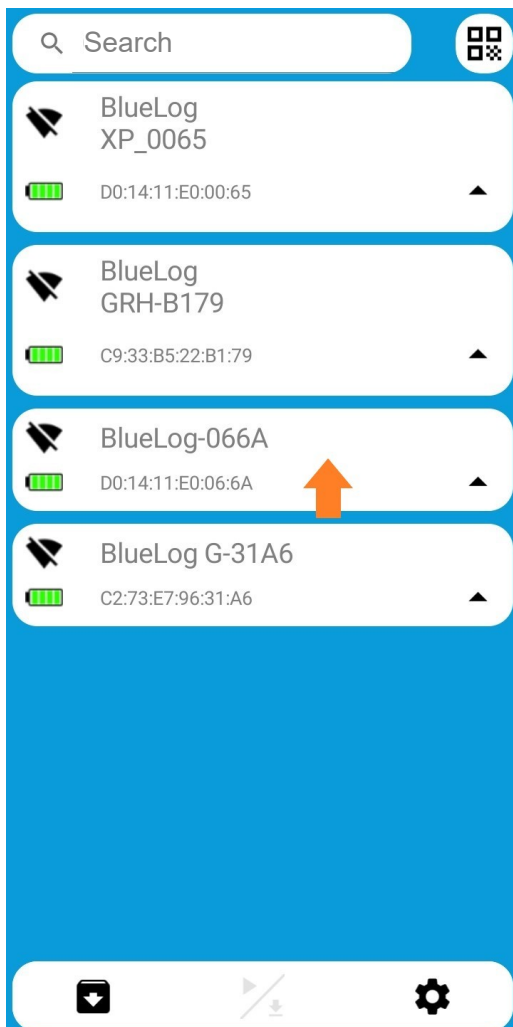


Association e selection

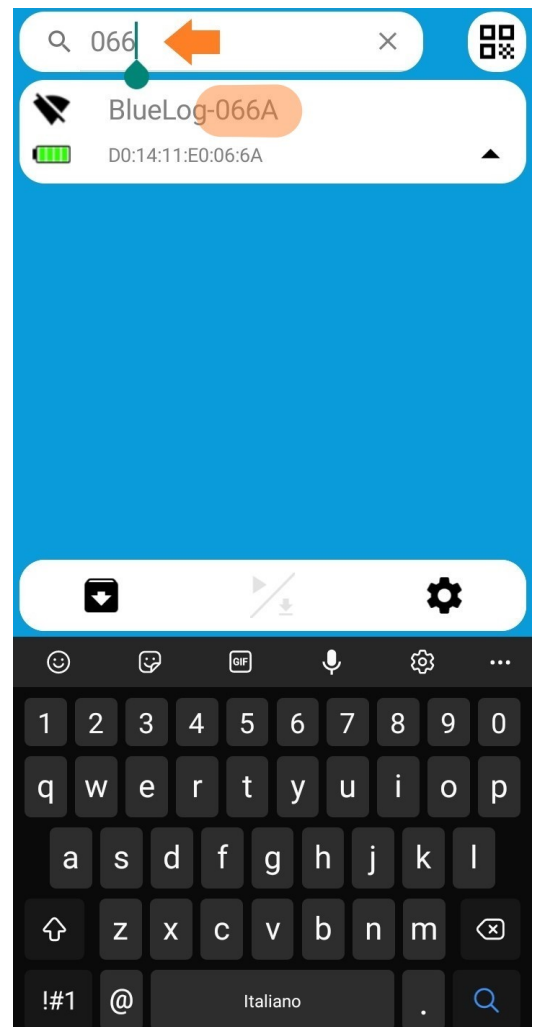
It is not recommended to pair the BlueLOG via your phone's Bluetooth, associate it with one of the following methods.

5 ways to associate BlueLOG with the BlueTrails app

You can search for BlueLOG by scrolling through the listed devices and selecting the one of interest. Tapping on the logger of interest will prompt you to associate the device with the phone.



Through the search bar you can enter the name or the serial of the logger to find it more easily. Once you find the device you can tap on the logger of interest and then you will be asked to associate the device to the phone.





Pressing the red button on the BlueLOG will show the pairing request on your phone.

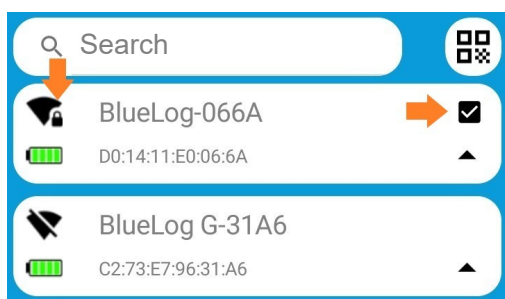


If your phone has NFC technology, with the app open on the main screen, place your phone on the back side of the BlueLOG. Once the logger has been identified, the phone will vibrate and/or sound. The app will then ask you to associate the logger with your phone.

In some BlueLOG models the NFC sensor is placed in front. In this case, the procedure remains unchanged unless you place the phone on the front side of the BlueLOG.



Pressing the icon in the upper right will open the camera, with which you have to frame the qr code on the back of the BlueLOG. You will be prompted to associate the chosen device.



Select/Deselect the BlueLOG

When the BlueLOG is paired, a lock will appear on the left indicating the correct pairing.

The check mark on the right indicates that the device is selected and is ready to start. You can select/deselect more than one BlueLOG at the same time.

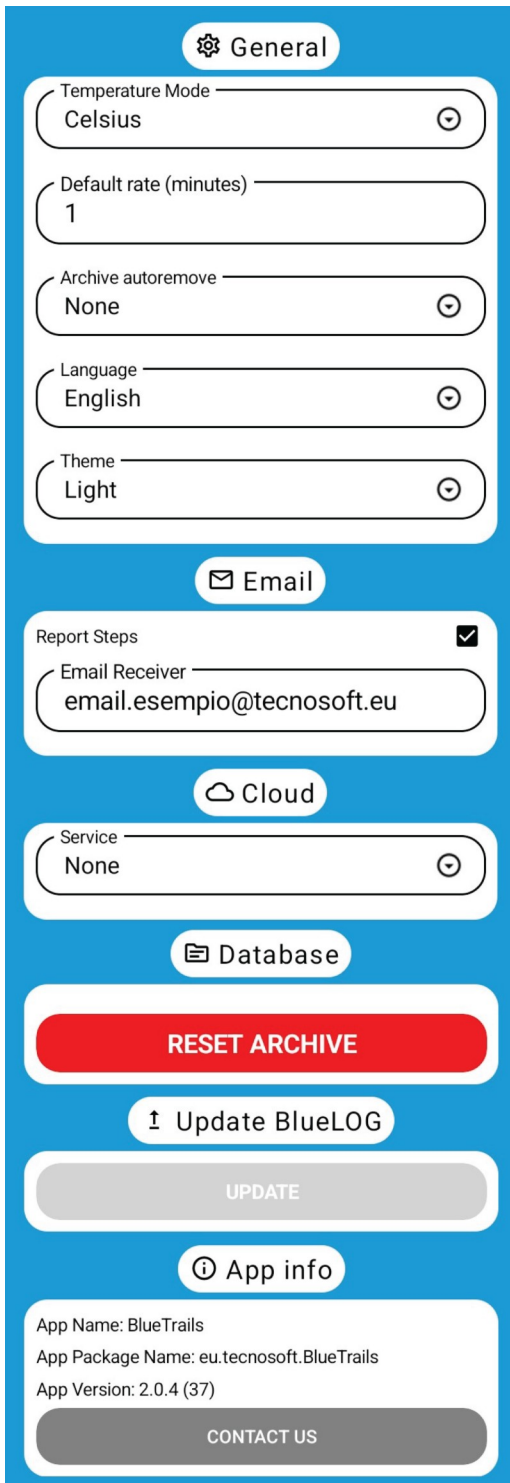
We recommend that you boot up to 5 devices at a time to maintain an optimal user experience.

Setting

To access the Settings, press on the gear at the bottom right of the main screen.



It's possible to set some default options and viewing options for the app.



It allows you to choose the unit of measurement between degrees Celsius and Fahrenheit.

Default acquisition rate. It's possible to change the parameter at the start of each mission.

Set the weekly, monthly or annual automatic deletion of the archive.

Choice of language: Italian - English

Choice between a light or dark theme

Email



Check the box if you want to receive Cc email whenever a report is sent via email.

Cloud



If you purchased a Cloud account to associate with the App, select "NOD". You will be asked to enter your login credentials.

The Cloud allows you to view mission data remotely. For more information write to sales@tecnosoft.eu

Database



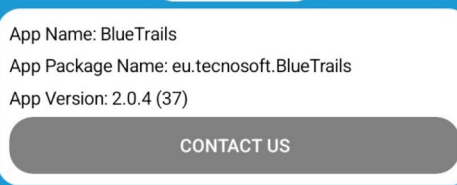
The button allows the total deletion of all missions saved on your phone.

Update BlueLOG



The button starts the BlueLOG update procedure.

App info



Details of the BlueTrails App.

By pressing the **Contact Us** button you will be redirected to the page with all Tecnosoft contacts.

Start a mission

To start a mission you must first have associated at least one BlueLOG. If the logger is correctly associated and selected, the center button in the options bar will become visible and clickable.

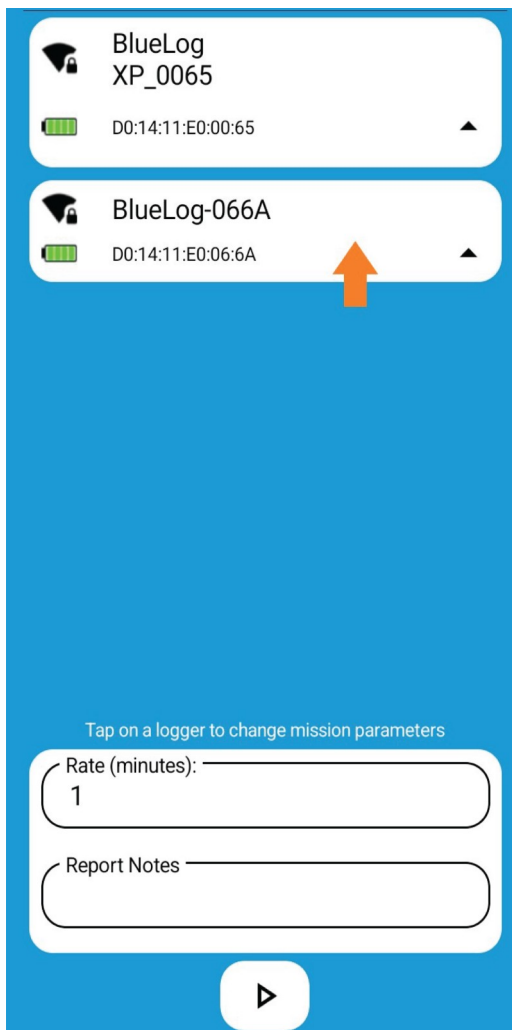


After pressing the start button, the app asks if you want to start or download the logger. To start a mission, press Start.



Customize a mission

You can customize the parameters by tapping on the individual associated logger. Each associated BlueLOG can have different parameters.



You can change the acquisition rate if different from the default one. All loggers will be started at the same rate of acquisition.

It is possible to insert any notes that will be present on the report.

Press > to confirm and start the mission.

General

Name

The changed name will only appear on the phone it was changed from. Other phones will not see the change.

Start/Stop Options

Start On Button

Stop On Button

Same Parameters For All Devices

Check **Start On Button** if you want to start the mission later. The start will be made by pressing the green button on the logger for at least five seconds. At the end of the five seconds, the green LED will flash four times, confirming the correct start.

Check **Stop On Button** to stop captures without using the app. To stop the mission simply press the red button for at least five seconds. Four red flashes confirm that the mission has been stopped.

Buzzer/LED

Buzzer enable

Led enable

Buzzer corresponds to the sound of Alarm played when it is reported that the limits set have been exceeded. It is possible to activate or deactivate, only if present on the logger the acoustic alarm.

Led corresponds to the flashing lights on the BlueLOG, check this item to enable them during the mission.

These two options consume battery, if they are not necessary it is recommended to leave them off.

Alert

Max Temperature Alarm °C

Min Temperature Alarm °C

Max Shock Alarm

Max Tilt Alarm

By setting the **maximum and minimum temperature** limits you can have alarms to exceed them.

In the same way, setting the **maximum shock** limit will detect the acceleration that corresponds to a fall or a sudden braking.

The **maximum tilt** limit will detect any tipping of the contents of the box.

The alarms are shown on the App next to the detection and reported on the report, give immediate feedback on the outcome of the mission and the integrity of the transported product.

MKT Parameters

Activation energy kJ/mole

Max Temp PreAlarm

Min Temp PreAlarm

By setting the **absolute temperature pre-alarm** limits the application will calculate the deterioration of the product, taking into account the microbial load of a product. In this way it will be possible to know if the mission has been successful. If the product has been compromised and the limits exceeded, an alarm will be generated that reports MKT above/below the maximum/minimum.

Mission Duration

Days

Hours

Minutes

In this section you can set the maximum mission duration. When the set time is exceeded, the readings are reported as out of time. This does not imply the automatic stop of the mission.

You don't need to fill in the fields unless you need to.

SAVE

Press **Save** to confirm the entered parameters.

Start a mission in "Real-Time"

Choose Real time to start the logger and receive the readings instantly. In this mode the phone must always stay close (up to 10m) to the BlueLOG to receive all the data correctly.



This mode allows to: constantly monitor the progress of the readings, check any alarms, record stops and generate partial and total reports. If you have the printed Bluetooth you can also print receipts.

If you leave the application or BlueLOG momentarily loses connection with your phone, you will be asked if you want to re-establish the connection and resume the mission that was in progress.

Start a mission in "Start only"

After setting mission parameters, press the Start button.  You will be prompted to choose between Real Time and Startup Only.



Choose **Start Only** to start the logger without the constant presence of the phone. In this mode it will not be possible to check all mission parameters in real time.

It is not necessary that the phone with which you started the BlueLOG is the same that will stop the mission and download the data, but to receive them you will need a phone with the BlueTrails App.

If for example the need is to monitor a round trip but not the return trip, it is advisable to tick the option "**Stop with button**" (See pg. 21) in this way the person who during the trip will take care of the transport, You can stop the mission by pressing 5 seconds the red button on the BlueLOG, while the red light will flash 4 times. You will need to download the Bluetrails App, connect to the BlueLOG and press the Download button to view the data and to view them on the Cloud. For more information about your Cloud account, write to the email "sales@tecnosoft.eu".

Stop the mission

Stop a mission in “Start only”

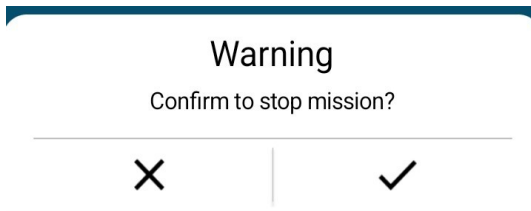
In case you have started a mission in **Start-Only** you will need to follow the following steps to view the data. Once the logger is correctly connected, press the central button of the application. Then press **Download** and wait for the data to be downloaded. Once finished the application will ask if you want to view the mission just downloaded. In case you have set up a NOD account, the application will ask if you want to load the mission on the online platform.



Stop a mission in “Real-Time”



To stop a mission launched in Real Time tap on the **X** of the menu.



A message will appear asking you to confirm the operation. Tap on the check icon to finish the mission, otherwise press on the **X** to return to the previous screen.

Before finally ending the mission there is the possibility to record the end of mission position by pressing on one of the stops already created or creating a new one always with the **+** button. It is not a necessary action. Press **X** to finish the mission.

Mission archive



The main menu by pressing the archive button you can always access the history of all the missions downloaded.

Attention, the deletion of the archive is subject to automatic deletion, customizable option in Settings (see pg. 10).

Windows of details of the missions

Fermate

In **Real Time** mode, you can track stops via GPS. When the mission starts, you are asked for a starting position. To add it, simply press on the + or you can proceed without setting a value.

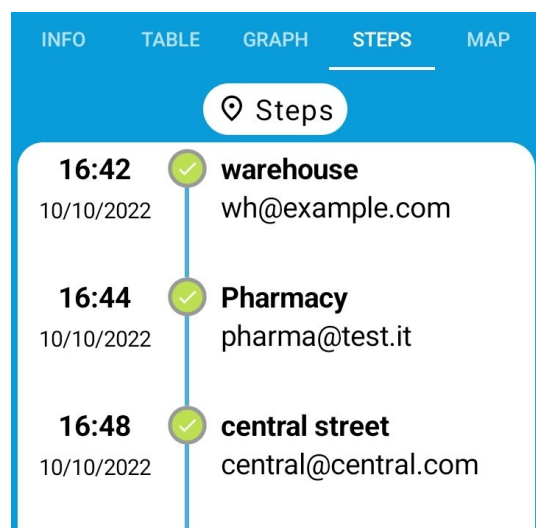


By holding down on the position you can change or delete the same.

Creating a starting point will appear 5 pages: 2 of which concern Stops and Maps. These two windows will appear only if you decide to keep track of your movements.



During the mission to add a stop, simply press on the icon of the van. You can then select a saved location or add a new one.

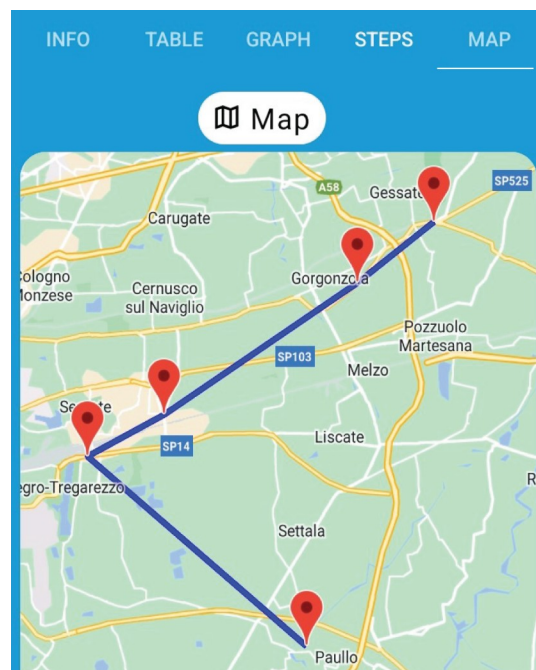


In this way the inserted stages will appear in order of insertion, with the help of the GPS of the phone will be independently identified the point where you are at the time of the insertion of the stage and will be kept track on the MAP.

Map

Adding a step, the app detects the location at that time and stores Latitude and Longitude and Address, these are among the data that will be reported on the report and that will identify the location. By adding a stop, the app proposes the current GPS location of the phone. If the location is not correct, at the top of the map you can write the correct address.

The app tracks an airline route by joining the stops that have been set.



Info



By pressing the **details** button, you will see the summary windows of the current mission.

INFO TABLE GRAPH STEPS MAP

General

Start Date:	10/10/2022
Start Time:	16:42:09
Duration:	00 00:29
Status:	RUNNING

Summary

Dev: BlueLog GRH-B179 Max: +25,19°C	Dev: BlueLog GRH-B179 Min: -20,71°C
Dev: BlueLog GRH-B179 Max: 90,7%RH	Dev: BlueLog GRH-B179 Min: 18,7%RH
Dev: BlueLog GRH-B179 Max: 85°	Dev: BlueLog GRH-B179 Max: 22,6G

Download Print

In the **INFO** window you will find some general data of the mission, such as the date and time of the start, the time elapsed from the start and the status of the mission.

The summary shows the maximum and minimum BlueLOG temperature measurements to which they refer. Depending on the characteristics of the BlueLOG, the summary will report maximum and minimum humidity, inclination and/or maximum acceleration.



By pressing the **download** button you can choose the preferred report format. Currently the app supports: PDF - XLS - TXT - HTML. If the mission is still in progress the report will be created with the data obtained so far.

Print options



By connecting a Bluetooth thermal printer for BlueLOG you can immediately print all the recorded acquisitions on a "receipt".

For more details about the Bluetooth thermal printer see pg. 22

Pressing on the printer icon will prompt you to tick the print options that will be present on the receipt. Below are the details of each check:

Printing options

Print Header	<input checked="" type="checkbox"/>	Print Summary	<input checked="" type="checkbox"/>
Print Sensor	<input checked="" type="checkbox"/>	Print Details	<input type="checkbox"/>
Measure: Inclination	<input type="checkbox"/>	Print Steps	<input checked="" type="checkbox"/>

PRINT

Printing heading:

- Printed on / at hours
- Mission start on / at
- Mission term on / to
- Duration of mission
- Status of mission
- Notes

Print summary:

- Name Data Logger
- Minimum temperature detected
- Mean of temperature
- Maximum temperature detected
- Alarms detected

Sensor printing:

- Name Data Logger
- Serial Number

Printing details:

- Name Data Logger
- Detail of individual measurements

Size: Angle of inclination

- Inclination in acquisition detail

Press stops

- Name of the stop
- Date and time
- Email
- Address

HEADER

Printed on: 04/08/2022 10:41
 Start: 08/02/2022 18:10
 concluded on: 02/08/2022 18:41
 Duration: 00.00:31:12
 Status: FINITE
 Note Report: Targa YH258TT

DATA LOGGER

Data Logger: BlueLog XRH-303D
 Min: +27,58 €
 Avg: +32.19
 Max: +34,88*
 Result: Top temperature
 at most
 Maximum inclination exceeded

DETAILS

Data Logger: BlueLog XRH-303D

STOP

starting point
 Time: 02/08/2022 18:10
 Email: test@tecnosoft.eu
 Address:

Via Galvani
 20068, Peschiera B.
 Italy

dd/MM/yyyy HH:mm T

02/08/2022 18:11 +27,58C* 0* 44,4
 02/08/2022 18:12 +27,67C* 0* 44,2
 02/08/2022 18:13 +27,69C* 0* 44,4
 02/08/2022 18:14 +27,58C* 0* 1,3G

The screenshot shows the 'Loggers' section with a dropdown menu set to 'BlueLog GI-01A6'. Below it, the status is 'Temperature above max', 'Calibrated On: Never calibrated', and 'Next calibration: 31/12/2099'. The 'Data' section below contains a table with columns for Date time, °C, °, and Events.

Date time	°C	°	Events
29/07/2022 11:29	+30,10	2	
29/07/2022 11:28	+30,04	1	
29/07/2022 11:27	+29,99	2	
29/07/2022 11:26	+29,90	2	
29/07/2022 11:25	+29,83	2	
29/07/2022 11:24	+29,77	1	
29/07/2022 11:23	+29,75	82	Tilt
29/07/2022 11:22	+29,73	82	Tilt

Table

In the **Table** window choosing from the drop-down menu, you can select between the loggers of the mission started simultaneously to see the details.

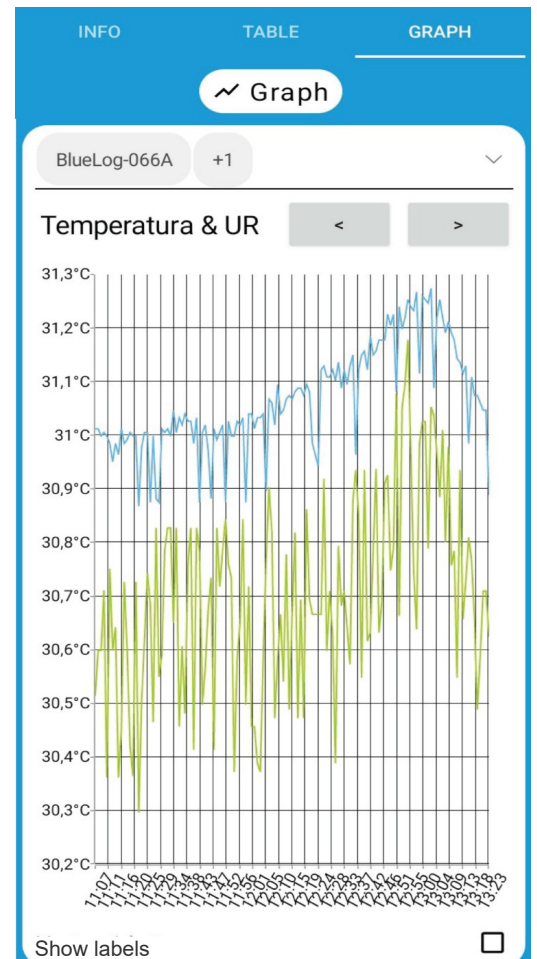
In the **Status** are reported the detected alarms concerning the selected logger.

In the **Data** section we find all the readings based on the set acquisition rate. In the event that an alarm threshold is exceeded, BlueLOG will begin to acquire once a second until the alarm threshold has not been reached. There is an **Events** column in the table. The table shows events related to the measure, such as exceeding thresholds.

Graph

In the **Graph** window you can see the trend of acquisitions. At the top, above the graph you can select one or more of a BlueLOG to display in the graph.

Moving with the arrows you can consult the graph dedicated to the inclination.




You can check **"Show labels"** to see the values more clearly on the graph.

Report



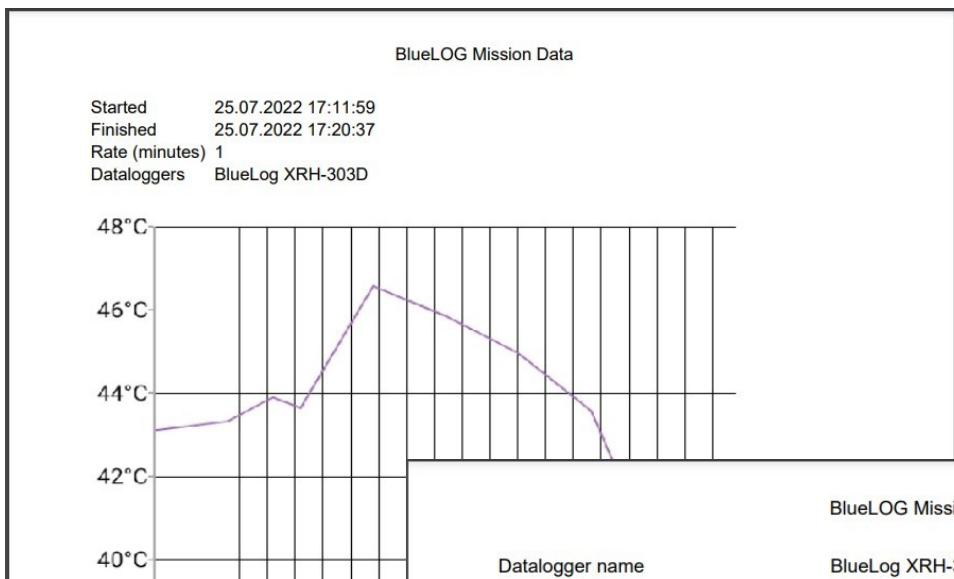
From the main menu by pressing the **archive** button you can always access the history of all the missions downloaded.

During a mission in Real Time, entering the mission of interest, pressing the key to download the data  you can choose which format originate the report.

The reports are composed of the following data:

- Launch date and time
- End of mission date and time
- Rate of acquisition
- Notes
- Alarms/Events detected
- Graph of measured temperatures
- Acquisitions in detail
- Stop details (date and time, name, email, location identified in Latitude and Longitude)

PDF



BlueLOG Mission Data				
Datalogger name				
BlueLog XRH-303D				
Allarme Temperatura Massima	+27,00	°C		
Allarme Temperatura Minima	+10,00	°C		
Soglia allarme inclinazione	5	°		
When	Temperature (°C)	Angle	RH	Events
25.07.2022 17:12:00	+29,71	0	43,1	
25.07.2022 17:13:00	+29,68	0	43,3	
25.07.2022 17:13:37	+29,67	0	43,9	Pulsante
25.07.2022 17:14:00	+29,63	74	43,6	Inclinazione
25.07.2022 17:15:00	+29,88	74	46,6	Inclinazione
25.07.2022 17:16:00	+30,54	7	45,8	Inclinazione
25.07.2022 17:17:00	+31,20	7	45,0	Inclinazione
25.07.2022 17:18:00	+31,89	7	43,6	Inclinazione
25.07.2022 17:19:00	+32,26	7	39,5	Inclinazione
25.07.2022 17:20:00	+32,01	2	39,8	

EXCEL

The Report in Excel is very similar to the PDF and consists of the same parts. A summary is created with the photo of the graph and if more than one logger is started at the same time, a worksheet will be created for each logger.

HTML

The HTML report is very similar to the PDF report in the parts it is composed of, but it looks like a web page.

TXT

The text report looks like this and reports mission data as in the following example:

Mission

```
-----
Started:7/25/2022 3:02:01 PM
Finished :1/1/0001 12:00:00 AM
Rate :0 (minutes)
Notes :
Dataloggers
```

```
-----
Name: BlueLog GRH-DBB7
Max temperature alarm:+20.00
Min temperature alarm:+10.00
Max Angle alarm :90
Max Shock alarm :1.0
```

Data

```
-----
When          Temperature  Angle G    RH         Tampered
7/25/2022 2:54:21 PM    +29.42    2          46.9
7/25/2022 2:54:26 PM    +29.39    11         47.0
7/25/2022 2:54:28 PM    +29.39    9          46.3
7/25/2022 2:54:29 PM    +29.38    9          46.0
7/25/2022 2:54:30 PM    +29.45    17         45.8
```

Steps

```
-----
When          Name          E-Mail      Latitude  Longitude
7/25/2022 2:54 PM    Magazzino    mag@test.it 45,41974 9,3946603
```

Buttons, Buzzer e LED

Buttons

- Pressing the **Red button** while searching for a BlueLOG will prompt you to confirm the association between your device and your phone.
- During a mission, both in Real Time and in Start Only, when the **Green button** is pressed, additional data will be acquired.
- If the start button option has been enabled, holding down the **Green button** for 5 seconds will start the mission.
- If the button stop option has been enabled, holding down the **Red button** for 5 seconds will stop the mission.

Buzzer

- If the **Buzzer option** is active, BlueLOG will sound after confirming the pairing request, confirming the pairing with the phone.
- If the active **LED option** is enabled, a sound corresponds to each detected event.

LED

- The green light flashes every 4 seconds, the BlueLOG is connected via Bluetooth to the phone.
- When you press the **Green button** to force a scan, the Green light will turn on once to confirm the reading.
- During a mission the green light flashes every 4 seconds, when a scan is detected, the flashing is longer.
- By enabling the **button start option**, while pressing the green button, the led light will flash 4 times.
- When a mission is stopped via BlueTrails app the Red LED light will flash 4 times.
- If the active **LED option** is enabled, a Red light corresponds to each threshold crossing.
- By enabling the **button stop option**, while pressing the red button, the led light will flash 4 times.

Accessories

Supporto a muro



Support for BlueLOG for wall mounting of data loggers. Enabling the anti-tamper function, in case the data logger should be disconnected from its support, it registers an alarm of mission compromise. It is ideal for those who entrust the shipment to third parties and want guarantees on the constant temperature of the goods.

Possibility of fixing by screw or bi-adhesive (screws and bi-adhesive included).

Dimensions 130 x 87 x 24 (mm)

For more information contact the email: sales@tecnosoft.eu

Bluetooth thermal printer



A portable Bluetooth thermal printer is available to connect to the phone and then to the BlueTrails app, immediately printing all recorded acquisitions on a "receipt" to be given to the recipient of the goods at the time of delivery.

For information on the receipt and how to use it, see pg. 16

For more information contact the email: sales1@tecnosoft.eu

Resolution of problems

Problema	Risoluzione
I can't find the BlueLOG in the device list	<ul style="list-style-type: none">➤ If you have just dissociated the logger it will take a few seconds before it becomes visible, try to refresh the page by swiping your finger from top to bottom.➤ If it is still not visible, it is advisable to exit the application, turn off and on the Bluetooth and try again.➤ If you have paired the BlueLOG via the Bluetooth device list, disassociate it. Try searching again from the app➤ If another user has paired the BlueLOG via Bluetooth it may not be visible until it is disassociated.
I can't find the printer	<ul style="list-style-type: none">➤ Try dissociating the printer in your phone's settings and re-pairing it. Whenever you associate a printer the application may need to be restarted completely.
The mission stops during loading.	<ul style="list-style-type: none">➤ It is recommended to exit the application, turn off and on Bluetooth and try pairing again.➤ Ask Tecnosoft if a new firmware version is available
I don't see the name of BlueLOG anymore	<ul style="list-style-type: none">➤ You may have deleted the BlueLOG name, launched a mission, entered the parameters and modified it.



Tecnosoft s.r.l.
Via Luigi Galvani, 4 - 20068 Peschiera Borromeo (Milano) - ITALY
e-mail: tecnosoft@tecnosoft.eu - web: www.tecnosoft.eu

UNI EN ISO 9001:2015 certified for Software development

